



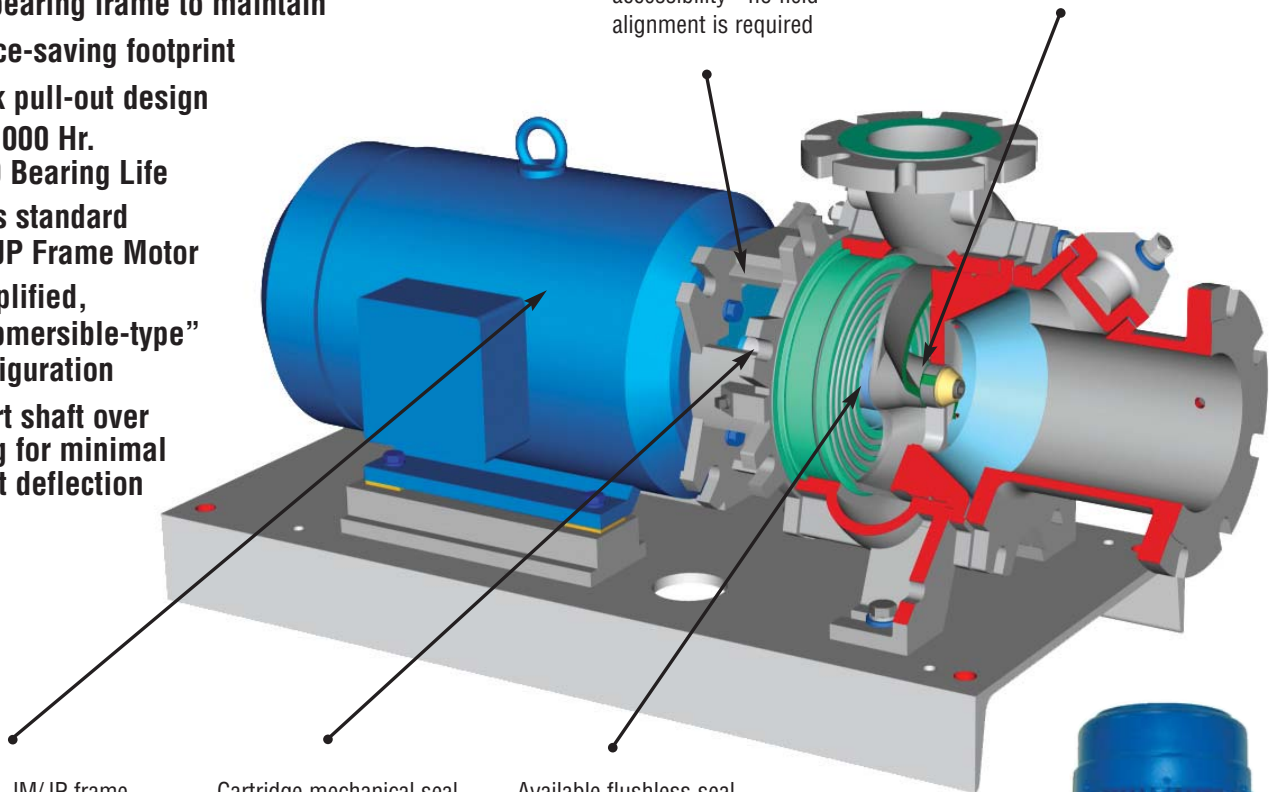
## CLOSE COUPLED CHOPX CHOPPER PUMPS

### Horizontal and Vertical Dry Pit Configurations

- No coupling to align
- No seal setting required
- No bearing frame to maintain
- Space-saving footprint
- Back pull-out design
- 100,000 Hr. L-10 Bearing Life
- Uses standard JM/JP Frame Motor
- Simplified, "submersible-type" configuration
- Short shaft over hang for minimal shaft deflection

Spigotted back pull-out assembly assures proper alignment and easy accessibility - no field alignment is required

Proven, heavy duty, high efficiency CHOPX wet end



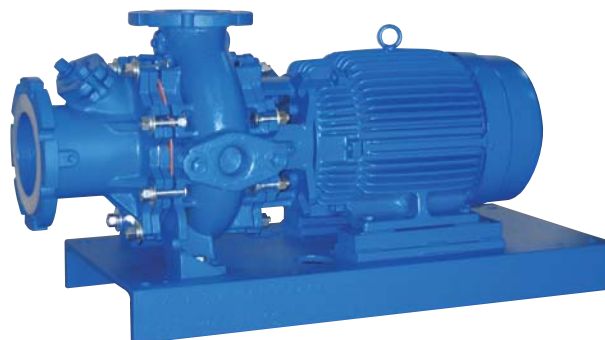
Standard JM/JP frame motors with minimum 100,000 Hr. L-10 bearing life

Cartridge mechanical seal means no seal assembly or settings are required in the field. Silicon carbide faces ensure long seal life

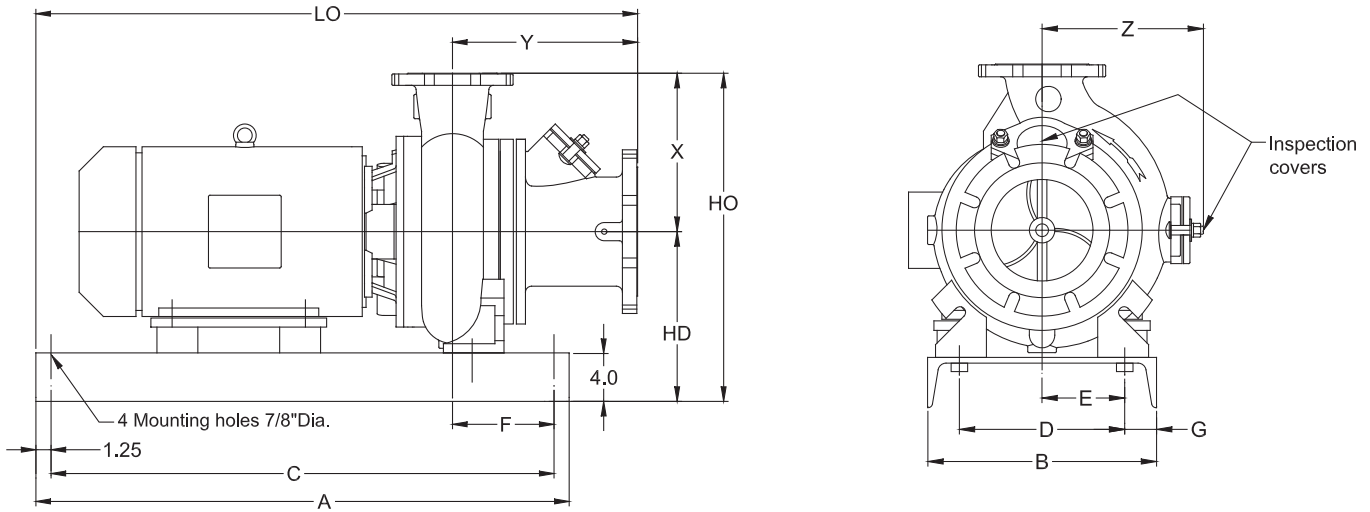
Available flushless seal configuration with tapered seal housing and open impeller back shroud prevents solids build-up

### Applications Include:

- Digester Recirculation/ Mixing
- Sludge Transfer
- Wood Chip Handling
- Plastics Handling
- Food Processing
- Scum

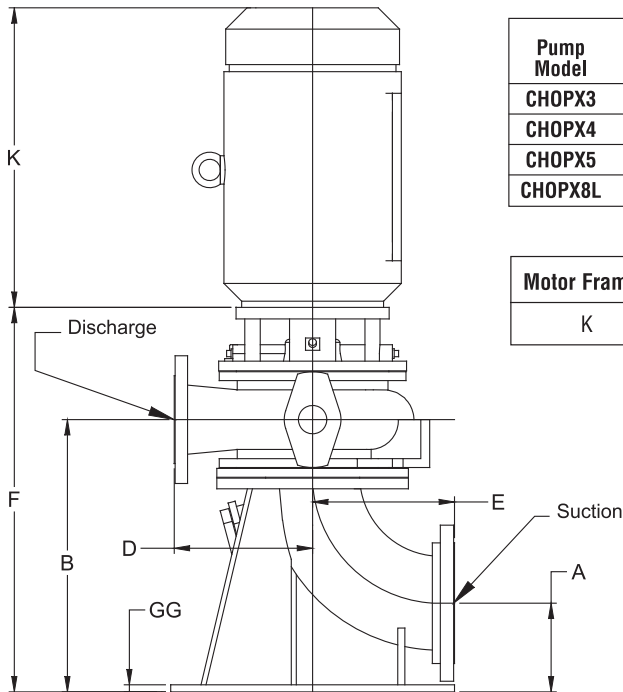


# Horizontal Base Mounted



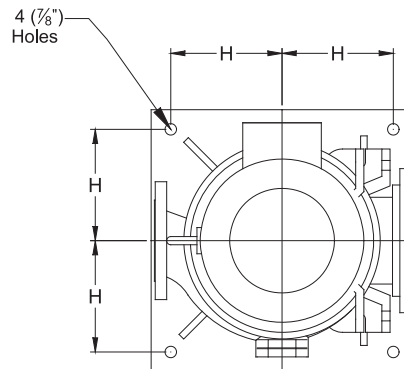
Pump Model	Suction and Discharge size		Motor Frame	A	C	LO	B	D	E	F	G	HD	HO	X	Y	Z
	Suct.	Disch.														
CHOPX3	6	3	182-215 JM	28.0	25.5	32.5	15.0	12.0	6.0	5.9	1.25	11.63	20.4	8.75	11.7	6.5
			213-215 JP	36.0	33.5	41.0	18.0	15.0	7.5	6.0	1.5	12.25	22.0	9.75	12.3	10.0
CHOPX4	6	4	254-286 JP	39.0	36.5	44.0	18.0	15.0	7.5	6.0	1.5	12.25	22.0	9.75	12.3	10.0
			254-256 JP	38.0	35.5	43.6	18.0	15.0	7.5	8.4	1.5	14.0	27.1	13.1	15.3	12.7
CHOPX5	8	5	284-326 JP	44.0	41.5	49.6	22.0	17.0	8.5	7.25	2.5	17.4	33.2	15.7	14.8	16.4
			254-256 JP	38.0	35.5	44.3	22.0	17.0	8.5	7.25	2.5	17.4	33.2	15.7	14.8	16.4
CHOPX8L	8	8	284-326 JP	44.0	41.5	50.3	22.0	17.0	8.5	7.25	2.5	17.4	33.2	15.7	14.8	16.4

# Vertical Dry Pit



Pump Model	Suction and Discharge size		A	B	D	E	F	GG	J	H
	Suct.	Disch.								
CHOPX3	6	3	6.25	18.75	8.75	10.00	23.25	0.5	20	8.5
CHOPX4	6	4	6.25	19.13	9.75	10.00	26.88	0.5	20	8.5
CHOPX5	8	5	10.75	27.00	13.00	13.13	34.25	0.75	24	11.0
CHOPX8L	8	8	10.75	26.63	15.75	13.13	34.25	0.75	24	11.0

Motor Frame	182/184 JM	213/215 JP	254/256 JP	284/286 JP	324/326 JP
K	13.0	16.5	21.5	24.0	26.0



Dimensions shown are in inches.

**U.S.A.**  
 1051 Clinton Street  
 Buffalo, New York 14206  
 (716) 856-4636 Fax (905) 693-1452

**CANADA**  
 5 Brigiden Gate  
 Halton Hills, ON L7G 0A3  
 (905) 693-8595 Fax (905) 693-1452

**Western U.S.A./  
 Western Canada**  
 (604) 986-8764  
 Fax (604) 986-8794

haywardgordon.com  
 info@haywardgordon.com

HGCC08/08-1.5M

Printed in Canada